

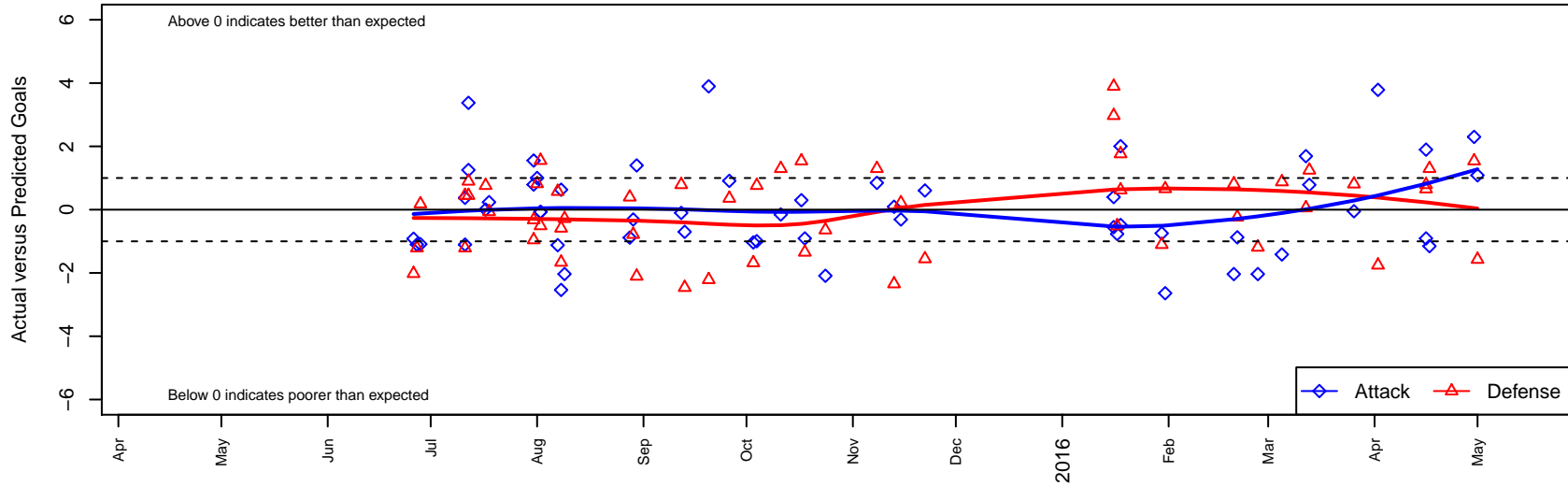
ISC Gunners A G01

Issaquah SC
 Issaquah, WA
 G01 total strength=1349
 attack=8.55 defense=5.24
 fall league = PSPL WSPL U14, PSPL Classic 1

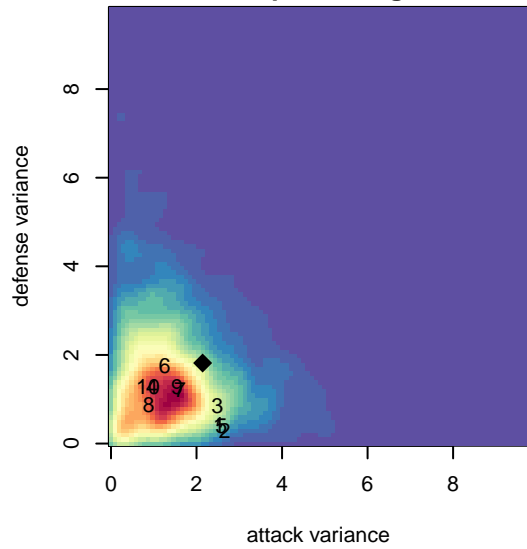
alt names used:
 ISC Gunners A G01
 ISC Gunners G01A

Venues played:
 2015 Rainier Challenge Samba U14
 2015 Gunners Invitational U14/U15 Gold
 2015 Nike Crossfire Challenge Gold Group U14
 2015 WA Rush Cup GU15 Silver U15
 2015 Bend Premier Cup U14G SILVER U14
 2015 NWCL U14
 2015 PSPL WSPL U14
 2015 PacNW Winter Classic Premier U14
 2015 PSPL Classic 1 U15
 2015 WA Cup GU14 Gold U14

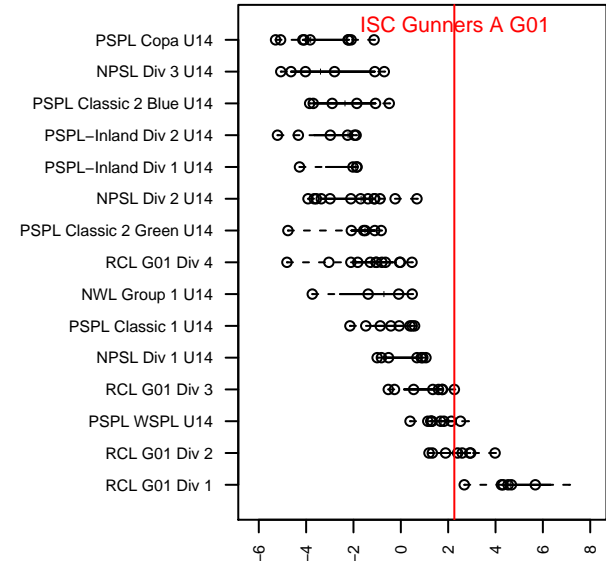
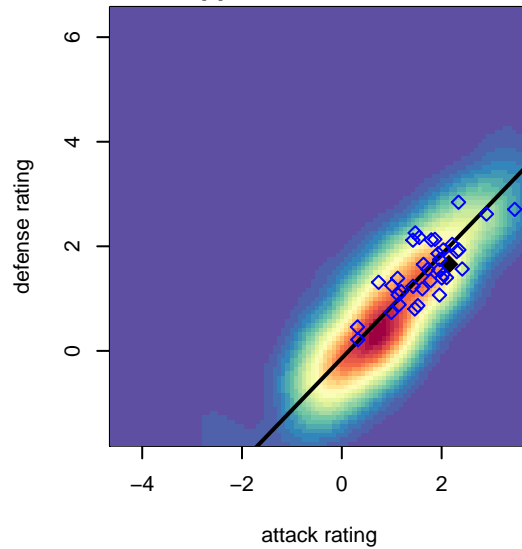
ISC Gunners A G01
 Dots are actual minus expected GF (blue circles) and GA (red triangles).
 Blue line is smoothed change in attack strength. Red is smoothed change in defense strength.



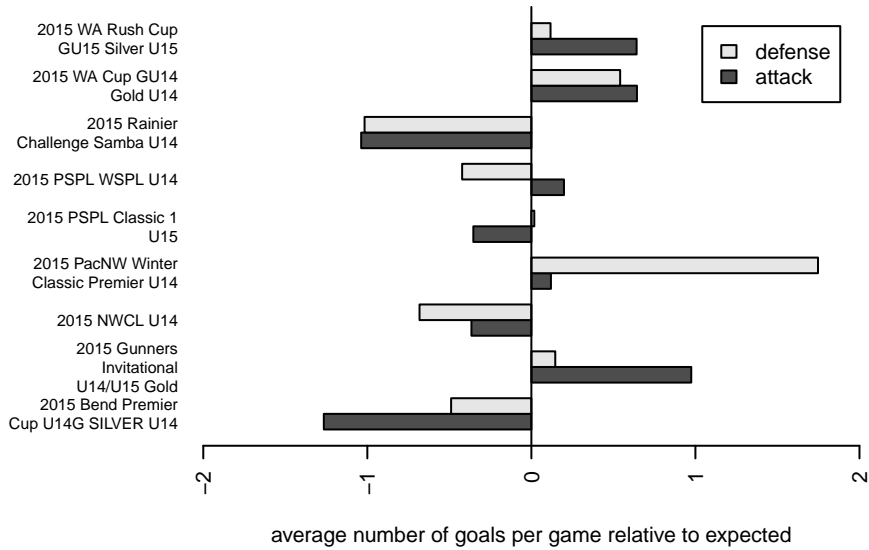
**attack and defense variance (black dot)
relative to other teams
and top 10 in region**



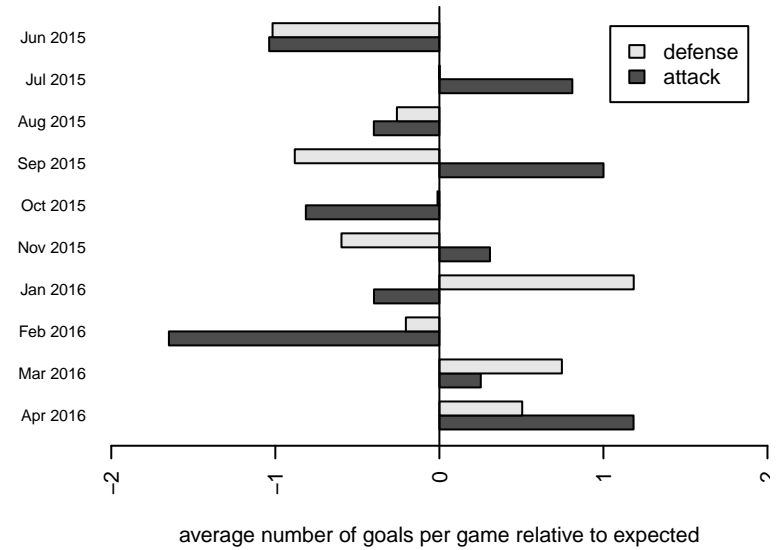
**attack and defense rating
relative to others at age
and all opponents in last 13 months**



Performance relative to 13 month average



Performance relative to 13 month average



| date | home | | away | | venue | pred.home | pred.away |
|------------|------------------------------|---|---------------------------|---|---------------------------------------|-----------|-----------|
| 2016-05-01 | ISC Gunners A G01 | 3 | ASE Emerald G01 | 4 | 2015 WA Cup GU14 Gold U14 | 1.92 | 2.43 |
| 2016-04-30 | ISC Gunners A G01 | 4 | TC United Navy G01 | 0 | 2015 WA Cup GU14 Gold U14 | 1.70 | 1.54 |
| 2016-04-17 | Highline Premier Blue G01 | 0 | ISC Gunners A G01 | 1 | 2015 WA Cup GU14 Gold U14 | 1.30 | 2.15 |
| 2016-04-16 | MVP Marauders Navy G01 | 1 | ISC Gunners A G01 | 1 | 2015 WA Cup GU14 Gold U14 | 1.65 | 1.91 |
| 2016-04-16 | ISC Gunners A G01 | 4 | RSA Elite Heather G01 | 0 | 2015 WA Cup GU14 Gold U14 | 2.10 | 0.79 |
| 2016-04-02 | ISC Gunners A G01 | 6 | NW United Premier G00 | 3 | 2015 PSPL Classic 1 U15 | 2.21 | 1.25 |
| 2016-03-26 | FPSC Fury White G00 | 0 | ISC Gunners A G01 | 3 | 2015 PSPL Classic 1 U15 | 0.81 | 3.05 |
| 2016-03-13 | NW United Premier G00 | 0 | ISC Gunners A G01 | 3 | 2015 PSPL Classic 1 U15 | 1.25 | 2.21 |
| 2016-03-12 | FME Fusion G00 | 1 | ISC Gunners A G01 | 5 | 2015 PSPL Classic 1 U15 | 1.06 | 3.31 |
| 2016-03-05 | ISC Gunners A G01 | 1 | Nortac Sparta Red G00 | 0 | 2015 PSPL Classic 1 U15 | 2.42 | 0.88 |
| 2016-02-27 | NK Storm G00 | 2 | ISC Gunners A G01 | 0 | 2015 PSPL Classic 1 U15 | 0.81 | 2.04 |
| 2016-02-21 | ISC Gunners A G01 | 1 | PS Slammers Black G00 | 2 | 2015 PSPL Classic 1 U15 | 1.87 | 1.76 |
| 2016-02-20 | ISC Gunners A G01 | 0 | NK Storm G00 | 0 | 2015 PSPL Classic 1 U15 | 2.04 | 0.81 |
| 2016-01-31 | RSA Elite G00 | 0 | ISC Gunners A G01 | 0 | 2015 PSPL Classic 1 U15 | 0.66 | 2.64 |
| 2016-01-30 | ISC Gunners A G01 | 3 | Fuerza FC Academy G00 | 2 | 2015 PSPL Classic 1 U15 | 3.75 | 0.90 |
| 2016-01-18 | Harbor Premier Green G01 | 0 | ISC Gunners A G01 | 3 | 2015 PacNW Winter Classic Premier U14 | 1.76 | 1.00 |
| 2016-01-18 | ISC Gunners A G01 | 0 | WA Rush G01 | 2 | 2015 PacNW Winter Classic Premier U14 | 0.48 | 2.62 |
| 2016-01-17 | ISC Gunners A G01 | 2 | RV Slammers White G01 | 1 | 2015 PacNW Winter Classic Premier U14 | 2.77 | 0.48 |
| 2016-01-16 | ISC Gunners A G01 | 0 | PacNW Maroon G01 | 3 | 2015 PacNW Winter Classic Premier U14 | 0.55 | 5.97 |
| 2016-01-16 | Crossfire OR United ECNL G01 | 0 | ISC Gunners A G01 | 1 | 2015 PacNW Winter Classic Premier U14 | 3.90 | 0.60 |
| 2015-11-22 | FC Spokane Black 1 G01 | 3 | ISC Gunners A G01 | 2 | 2015 PSPL WSPL U14 | 1.45 | 1.39 |
| 2015-11-15 | ISC Gunners A G01 | 1 | WA East G01 | 2 | 2015 PSPL WSPL U14 | 1.31 | 2.22 |
| 2015-11-13 | ISC Gunners A G01 | 2 | MVP Marauders Navy G01 | 4 | 2015 PSPL WSPL U14 | 1.91 | 1.65 |
| 2015-11-08 | Highline Premier Blue G01 | 0 | ISC Gunners A G01 | 3 | 2015 PSPL WSPL U14 | 1.30 | 2.15 |
| 2015-10-24 | NW United Premier G01 | 2 | ISC Gunners A G01 | 1 | 2015 PSPL WSPL U14 | 1.36 | 3.09 |
| 2015-10-18 | MVP Marauders Navy G01 | 3 | ISC Gunners A G01 | 1 | 2015 PSPL WSPL U14 | 1.65 | 1.91 |
| 2015-10-17 | TC United Navy G01 | 0 | ISC Gunners A G01 | 2 | 2015 PSPL WSPL U14 | 1.54 | 1.70 |
| 2015-10-11 | ISC Gunners A G01 | 2 | Highline Premier Blue G01 | 0 | 2015 PSPL WSPL U14 | 2.15 | 1.30 |

| date | home | | away | | venue | pred.home | pred.away |
|------------|------------------------------|---|-----------------------------------|---|--|-----------|-----------|
| 2015-10-04 | Harbor Premier Green G01 | 1 | ISC Gunners A G01 | 0 | 2015 NWCL U14 | 1.76 | 1.00 |
| 2015-10-03 | ISC Gunners A G01 | 0 | THUSC United Mercury Reserves G01 | 3 | 2015 NWCL U14 | 1.04 | 1.32 |
| 2015-09-26 | ISC Gunners A G01 | 4 | NW United Premier G01 | 1 | 2015 PSPL WSPL U14 | 3.09 | 1.36 |
| 2015-09-20 | RSA Elite Heather G01 | 3 | ISC Gunners A G01 | 6 | 2015 PSPL WSPL U14 | 0.79 | 2.10 |
| 2015-09-13 | ISC Gunners A G01 | 1 | TC United Navy G01 | 4 | 2015 PSPL WSPL U14 | 1.70 | 1.54 |
| 2015-09-12 | ISC Gunners A G01 | 2 | RSA Elite Heather G01 | 0 | 2015 PSPL WSPL U14 | 2.10 | 0.79 |
| 2015-08-30 | Crossfire OR United ECNL G01 | 6 | ISC Gunners A G01 | 2 | 2015 NWCL U14 | 3.90 | 0.60 |
| 2015-08-29 | ISC Gunners A G01 | 1 | WA East G01 | 3 | 2015 NWCL U14 | 1.31 | 2.22 |
| 2015-08-28 | Indie Chicas G01 | 1 | ISC Gunners A G01 | 1 | 2015 NWCL U14 | 1.40 | 1.88 |
| 2015-08-09 | CSC Storm G01 | 2 | ISC Gunners A G01 | 0 | 2015 Bend Premier Cup U14G SILVER U14 | 1.72 | 2.03 |
| 2015-08-08 | Eastside Timbers Black G01 | 2 | ISC Gunners A G01 | 4 | 2015 Bend Premier Cup U14G SILVER U14 | 0.34 | 6.54 |
| 2015-08-08 | ISC Gunners A G01 | 6 | THUSC Lithium G01 | 1 | 2015 Bend Premier Cup U14G SILVER U14 | 5.37 | 0.41 |
| 2015-08-07 | ISC Gunners A G01 | 3 | Thelo Thorns G01 | 0 | 2015 Bend Premier Cup U14G SILVER U14 | 4.12 | 0.57 |
| 2015-08-02 | ISC Gunners A G01 | 1 | WA Rush Nero G00 | 0 | 2015 WA Rush Cup GU15 Silver U15 | 1.07 | 1.55 |
| 2015-08-02 | ISC Gunners A G01 | 1 | Crossfire Premier Reece G00 | 2 | 2015 WA Rush Cup GU15 Silver U15 | 1.07 | 1.49 |
| 2015-08-01 | Whatcom FC Rangers White G00 | 0 | ISC Gunners A G01 | 4 | 2015 WA Rush Cup GU15 Silver U15 | 0.82 | 3.00 |
| 2015-07-31 | PacNW White G00 | 2 | ISC Gunners A G01 | 2 | 2015 WA Rush Cup GU15 Silver U15 | 1.05 | 1.21 |
| 2015-07-31 | LWPFCA White Piranhas G00 | 2 | ISC Gunners A G01 | 3 | 2015 WA Rush Cup GU15 Silver U15 | 1.68 | 1.45 |
| 2015-07-18 | Crossfire OR LOSC Blue 1 G01 | 1 | ISC Gunners A G01 | 2 | 2015 Nike Crossfire Challenge Gold Group | 0.94 | 1.76 |
| 2015-07-17 | Harbor Premier Green G01 | 1 | ISC Gunners A G01 | 1 | 2015 Nike Crossfire Challenge Gold Group | 1.76 | 1.00 |
| 2015-07-12 | Fuerza FC Academy G00 | 0 | ISC Gunners A G01 | 5 | 2015 Gunners Invitational U14/U15 Gold | 0.90 | 3.75 |
| 2015-07-12 | ISC Gunners A G01 | 5 | WPFC A G02 | 1 | 2015 Gunners Invitational U14/U15 Gold | 1.63 | 1.45 |
| 2015-07-11 | ISC Gunners A G01 | 2 | WPFC A G02 | 1 | 2015 Gunners Invitational U14/U15 Gold | 1.63 | 1.45 |
| 2015-07-11 | ISC Gunners A G01 | 1 | RSA Elite Heather G01 | 2 | 2015 Gunners Invitational U14/U15 Gold | 2.10 | 0.79 |
| 2015-06-28 | ISC Gunners A G01 | 0 | WPFC B G01 | 2 | 2015 Rainier Challenge Samba U14 | 1.09 | 2.18 |
| 2015-06-27 | RSA Elite Heather G01 | 2 | ISC Gunners A G01 | 1 | 2015 Rainier Challenge Samba U14 | 0.79 | 2.10 |
| 2015-06-26 | ISC Gunners A G01 | 0 | Kitsap Alliance Red G01 | 3 | 2015 Rainier Challenge Samba U14 | 0.92 | 0.98 |